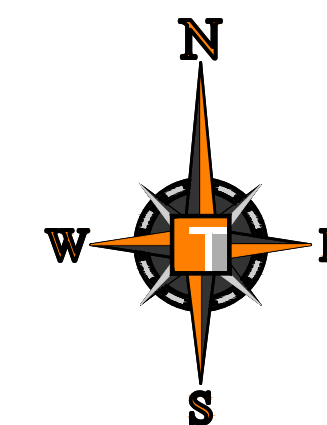


INFORMATION CONTAINED IN CPTED & SECURITY STRENGTHENING NARRATIVE DOCUMENTS & DIAGRAM DRAWINGS ARE CONSIDERED CONFIDENTIAL PURSUANT TO FLORIDA STATE STATUTES 11\*9.071 (3); 119.15 (6B1); 281.301 & 286.011.



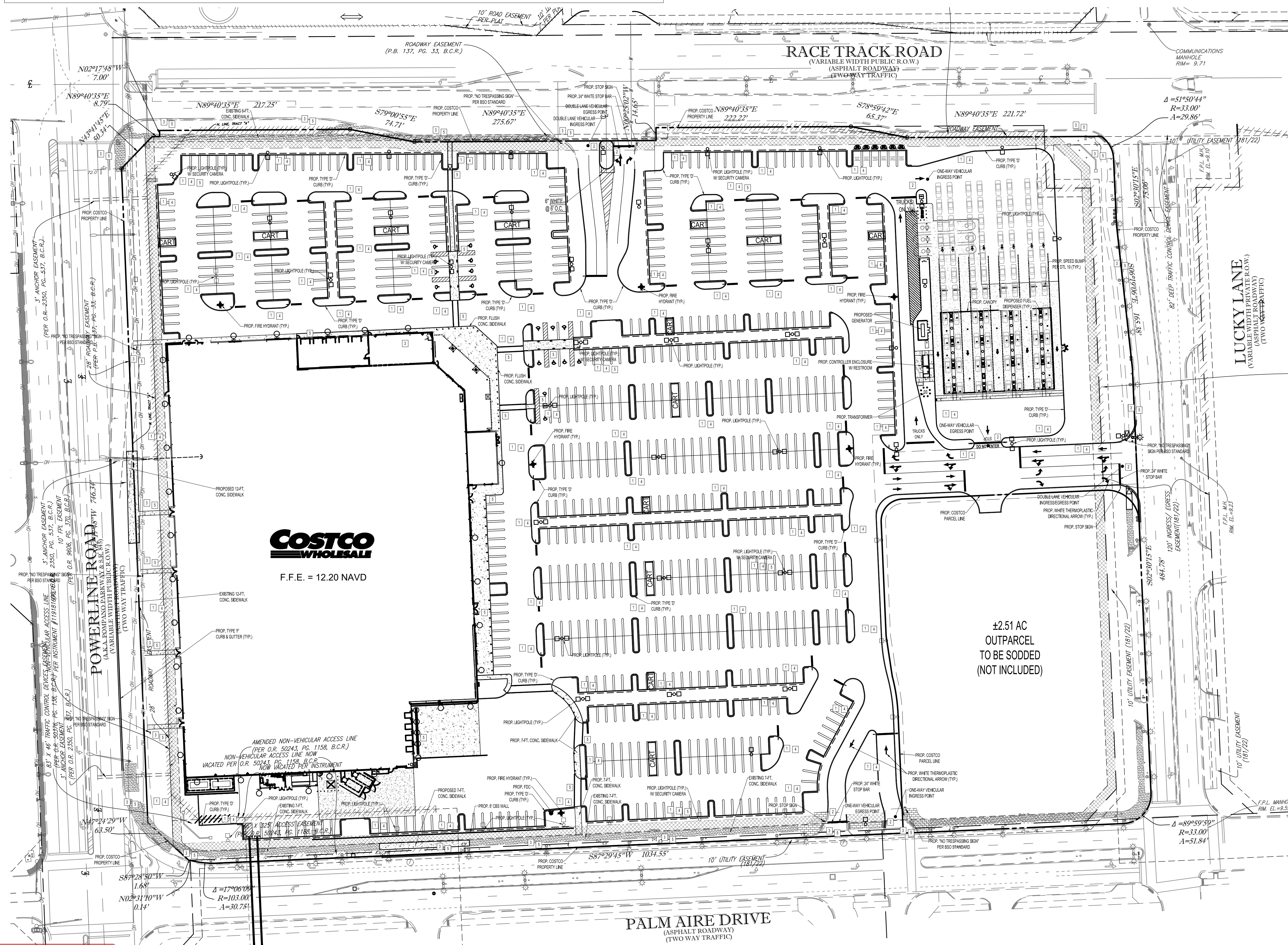
**COSTCO**  
**WHOLESALE**  
POMPANO BEACH

COSTCO  
WHOLESALE  
CORPORATION

999 LAKE DRIVE  
ISSAQUAH, WA 98027  
T: 425.313.8100  
www.costco.com



6300 NW 31st AVENUE  
FORT LAUDERDALE, FL 33309  
PH: (954) 202-7000  
[www.ThomasEngineeringGroup.com](http://www.ThomasEngineeringGroup.com)



CRIME PREVENTION THROUGH ENVIRONMENTAL DESIGN  
LEGEND

1

PRINCIPLE #1 - NATURAL SURVEILLANCE:  
"SEE AND BE SEEN" IS THE OVERALL GOAL WHEN IT COMES TO CPTED AND NATURAL SURVEILLANCE. A PERSON IS LESS LIKELY TO COMMIT A CRIME IF THEY THINK SOMEONE WILL SEE THEM DO IT. LIGHTING AND LANDSCAPE PLAY AN IMPORTANT ROLE IN CRIME PREVENTION THROUGH ENVIRONMENTAL DESIGN.

- ADEQUATE TREE SPACING TO MINIMIZE VISUAL OBSTRUCTIONS
- EXTERIOR LIGHT POLES AND BUILDING LIGHTS TO AVOID DARK OR BLACK SPOTS. MOTION SENSOR LIGHT AT SERVICE DOOR AND DUMPSTER AREA.
- VISIBLE EXTERIOR DOORS TO THE STREET AND NEIGHBORS ALLOW FOR PUBLIC SURVEILLANCE.

2

PRINCIPLE #2 - NATURAL ACCESS CONTROL



NATURAL ACCESS CONTROL IS MORE THAN A HIGH BLOCK WALL TOPPED WITH BARBED WIRE. CRIME PREVENTION THROUGH ENVIRONMENTAL DESIGN OR OPTED UTILIZES THE USE OF WALKWAYS, FENCES, LIGHTING, SIGNAGE AND LANDSCAPE TO CLEARLY GUIDE PEOPLE AND VEHICLES AWAY FROM THE PROBLEM ENTRANCES. THE GOAL WITH THIS OPTED PRINCIPLE IS NOT NECESSARILY TO KEEP INTRUDERS OUT, BUT TO DIRECT THE FLOW OF PEOPLE WHILE DECREASING THE OPPORTUNITY FOR CRIME.

- 000 - PERIMETER LANDSCAPING WITH TREES AND SHRUBBERY DIRECTS TRAFFIC DRIVERS AND PEDESTRIANS TO THE LOCATIONS INTENDED FOR PUBLIC ACCESS
- 0 - BUILDING LIGHTING PROVIDES WELL LIT WALKWAYS AND ENTRANCES
- 1 - LIMITED ACCESS POINTS WILL DIRECT THE PUBLIC TO THE ENTRANCE LOCATIONS INTENDED FOR PUBLIC ACCESS.
- 2 - FREESTANDING SIGNAGE AND BUILDING SIGNAGE WILL CLEARLY IDENTIFY THE BUSINESS AND ASSIST IN DEFINING THE ENTRANCE LOCATIONS INTO BOTH THE BUILDING AND GAS FACILITY.

3  
PRINCIPLE #3 - TERRITORIAL REINFORCEMENT:  
CREATING OR EXTENDING A "SPHERE OF INFLUENCE" BY UTILIZING PHYSICAL  
DESIGNS SUCH AS PAVEMENT TREATMENTS, LANDSCAPING AND SIGNAGE THAT  
ENABLE USERS OF AN AREA TO DEVELOP A SENSE OF PROPRIETORSHIP OVER IT IS  
THE GOAL OF THIS CPED PRINCIPLE. PUBLIC AREAS ARE CLEARLY DISTINGUISHED  
FROM PRIVATE ONES. POTENTIAL TRESPASSERS PERCEIVE THIS CONTROL AND ARE  
THEREBY DISCOURAGED.

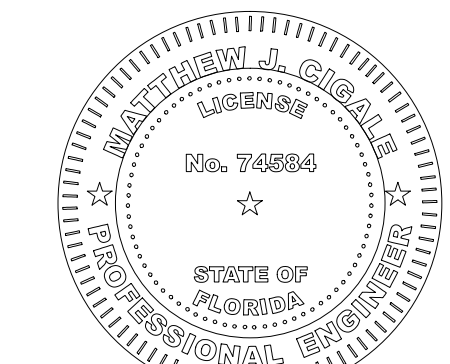
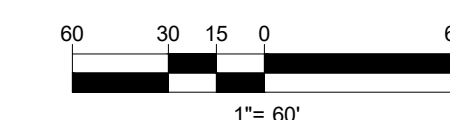
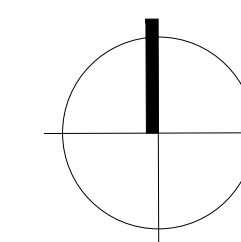
- ③ -FREESTANDING SIGNAGE AND BUILDING SIGNAGE WILL CLEARLY IDENTIFY THE BUSINESS AND ASSIST IN DEFINING THE ENTRANCE LOCATIONS INTO BOTH THE BUILDING AND GAS FACILITY
- ④ -PERIMETER LANDSCAPING WITH TREES AND SHRUBBERY DIRECTS BOTH DRIVERS AND PEDESTRIANS TO THE LOCATIONS INTENDED FOR PUBLIC ACCESS

4  
PRINCIPLE #4 - MAINTENANCE: CPTED AND THE "BROKEN WINDOW THEORY" SUGGESTS THAT ONE "BROKEN WINDOW" OR NUISANCE, IF ALLOWED TO EXIST, WILL LEAD TO OTHERS AND ULTIMATELY TO THE DECLINE OF AN ENTIRE NEIGHBORHOOD. NEGLECTED AND POORLY MAINTAINED PROPERTIES ARE BREEDING GROUNDS FOR CRIMINAL ACTIVITY. A FORMAL CPTED BASED MAINTENANCE PLAN WILL HELP YOU PRESERVE YOUR PROPERTY VALUE AND MAKE IT A SAFER PLACE.

-  -ROUTINE MAINTENANCE OF LANDSCAPING, LIGHTING & TRASH PICK-UP
-  -WINDOWS WILL BE KEPT CLEAN AND CLEAR.

PRINCIPLE #5 - ACTIVITY 5  
ACTIVITY SUPPORT - INCREASE THE USE OF A BUILT ENVIRONMENT FOR SAFE  
ACTIVITIES WITH THE INTENT OF INCREASING THE RISK OF DETECTION OF CRIMINAL  
AND UNDESIRABLE ACTIVITIES. NATURAL SURVEILLANCE BY THE INTENDED USERS  
CASUAL AND THERE IS NO SPECIFIC PLAN FOR PEOPLE TO WATCH OUT FOR CRIMINAL  
ACTIVITY

- OPERATING HOURS COINCIDE WITH NEIGHBORING BUSINESSES
- SECURITY CAMERAS



October 29, 2025  
FLORIDA BUSINESS CERT. OF AUTH. No. 27528

[illegible]

F240051  
OCT. 17. 2025

### OVERALL CPTED PLAN

## C-14.0

OCT. 17, 2025

## OVERALL CPTED PLAN

**DRC**  
COSTCO - POMPANO BEACH  
PZ25-12000023  
12/09/2025  
POMPANO BEACH, FLORIDA